

NEW!

ENGINE DRIVEN WELDERS

Bulldog[®] 5500

Processes

Stick

Product Number

K2708-2

See back for complete specs

Output Range

70-140A AC Welding
5,500 Watts Surge AC Generator
4,000 Watts Continuous AC Generator

Rated Output - Current/Voltage/Duty Cycle

125A AC/20V/30%
100A AC/25V/60%

Number of Cylinders

1

HP @ Speed (RPM)

9.5 HP @ 3,600 RPM

Weight/Dimensions (H x W x D)

198 Lbs. (90 Kg)
25.6 x 21.8 x 31.5 in.
(651 x 553 x 800 mm)

Portable AC Welder/ AC Generator

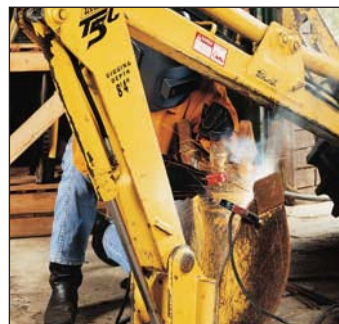
It's great for homeowners and anyone who needs portable AC stick welding and AC generator power!

FEATURES

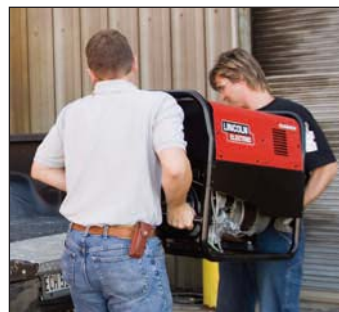
- ▶ **Low-Lift™ Grab Bars (Patent Pending)**
 - More leverage for lifting unit on and off truck beds.
 - Extra protection against product damage.
 - Best in class feature!
- ▶ **1-1/4 in. (32 mm) Diameter Rugged Tube Frame**
 - Great for all-around sturdy protection.
 - Largest diameter tube frame in its class!
 - Best in class feature!
- ▶ **AC Welding with up to 1/8 in. (3.2 mm) Stick Electrode**
 - Up to 140 amps of AC output for many applications.
- ▶ **5,500 Watts Surge (4,000 Watts Continuous) AC Generator Power**
 - Many uses! Grinder, work lights, pump, motor starting, or emergency power.
 - Plug in a Lincoln® POWER MIG® 140C for wire welding.

APPLICATIONS

- ▶ Home Use
- ▶ Maintenance and Repair
- ▶ Ranch/Farm



AC stick welding



Low-Lift™ Grab Bars

INPUT



OUTPUT



Powered By:

KOHLER.



Two Year Extended
Warranty Available
in U.S. and Canada



Web Update 05/11

Publication E6.32 | Issue Date 02/11
© Lincoln Global, Inc. All Rights Reserved.

THE LINCOLN ELECTRIC COMPANY
22801 St. Clair Avenue • Cleveland, OH • 44117-1199 • U.S.A.
PH: +1.216-481-8100 • www.lincolnelectric.com

LINCOLN[®]
ELECTRIC
THE WELDING EXPERTS[®]

ARC PERFORMANCE

- Up to 140 amps of AC welding output for welding steel, stainless steel, cast iron or hardfacing projects with up to 1/8 in. (3.2 mm) stick electrode. Suggested electrodes are Lincoln Electric 7018AC (AWS E7018) and Fleetweld® 180 (AWS E6011).
- Single, full range calibrated welding output dial makes it simple to dial in the ideal amperage for your repair, maintenance or fabrication project. Dial also includes operating ranges for 3/32 in. (2.4 mm) and 1/8 in. (3.2 mm) electrode.

AC GENERATOR PERFORMANCE

- Delivers up to 16.7 amps continuous power from the 240V AC receptacle, and up to 33.3 amps continuous power from the two 120V AC duplex receptacles.
- All outlets are circuit breaker protected.
- Optional GFCI (Ground Fault Circuit Interrupter) Kit available for additional protection from electric shock in the AC generator auxiliary power circuit.

GENERATOR POWER APPLICATION CHART

Suggested Power Applications	Running Watts (Continuous)	Start-Up Watts ⁽¹⁾ (Surge)
Airless Sprayer - 1/3 HP	600	1,500 - 2,400
Electric Motor - 1 HP	1,000	2,500 - 4,000
Portable Grinder - 7 in.	2,000	
Halogen Work Light	500	
Hand Drill - 3/8 in.	700	
Heater	1,750	
Submersible Pump - 1 HP	1,000	2,500 - 4,000
Sump Pump	600	1,500 - 2,400
Lincoln Electric Wire Feeder/Welder	2,400	

⁽¹⁾ Equipment with unusually high START-UP WATTS is listed. For start-up of other tabled equipment that uses a motor, allow up to 2 times the RUNNING WATTS shown above. Multiple loads can be used as long as the total load does not exceed 4,000 watts continuous.

Note: Wattage listing is approximate. Check your equipment for actual wattage.

FEATURES

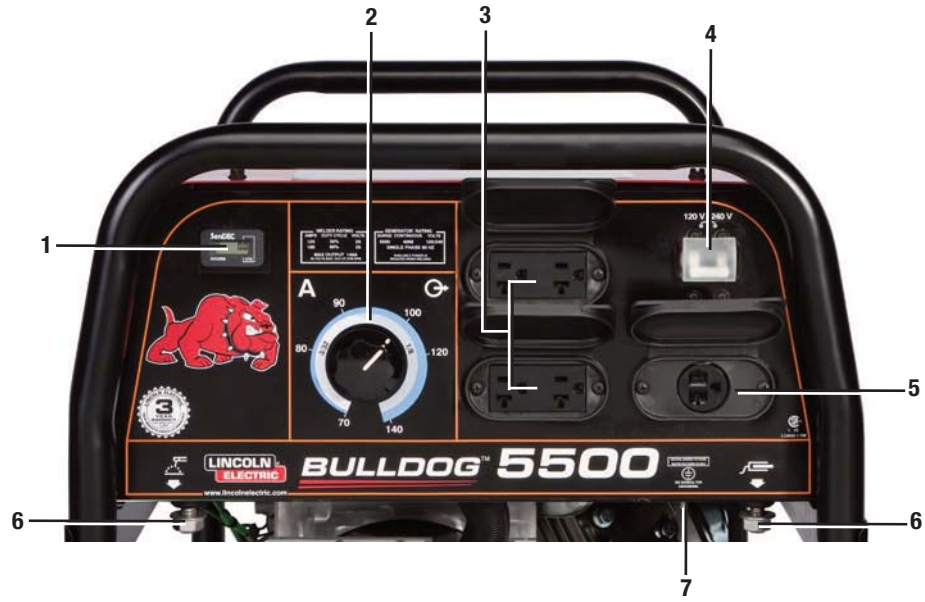
- Low-Lift™ grab bars provide more leverage compared to competitive equipment for lifting the Bulldog™ 5500 on and off truck beds and other high surfaces. Grab bars also provide extra protection against product damage.
- Kohler® 9.5 HP Model CH395 OHV (overhead valve) gasoline engine with:
 - Cast iron cylinder liner for long engine life.
 - Automatic shutdown for low oil level.
 - 3 Year Kohler® engine warranty.
- Easy to maintain engine with oil changes only every 100 hours. No oil filter to change.
- Hour meter on control panel to monitor run time for scheduled engine maintenance.
- Noise at rated load:
 - 103 dB Sound Power (Lwa)
 - 78.2 dBA Sound Level at 23 ft. (7 m)
- Combination muffler/spark arrestor virtually eliminates spark emissions.

QUALITY AND RELIABILITY

- Welding and AC Generator Outputs Rated at 104°F (40°C).
- Dependability and long life aided by all-copper windings in rotor and stator with high quality insulation.
- Red and black powder paint finish offers increased durability with added protection from rust and corrosion. Also ultraviolet resistant to better retain color and gloss.
- Manufactured under a quality system certified to ISO 9001 requirements.
- This equipment meets U.S. EPA EVAP standards for reduced emissions of gasoline vapor.
- Canadian Standards Association (CSA) certified.
- Three-year Lincoln Electric warranty on parts and labor (engine is warranted separately by the manufacturer).

KEY CONTROLS

1. Engine Hour Meter
2. Output Control Dial
3. 120 Volt AC Receptacles (NEMA 5-20R)
4. Circuit Breaker
5. 240 Volt AC Receptacle (NEMA 6-20R)
6. Output Studs
7. Grounding Stud



MACHINE SPECIFICATIONS

Product Name	Ordering Information	Description	CC Rated Output Current/Voltage/Duty Cycle	Generator AC Power ⁽¹⁾	Dimensions H x W x L inches (mm)	Weight lbs. (kg)
Bulldog® 5500	K2708-2	140 Amp AC Arc Welder with 5,500 Watts Surge 4,000 Watts Continuous AC Power	AC Constant Current 125A AC/20V/30% 100A AC/25V/60% Current Range 70-140 A Max. OCV@ 3750 RPM 66V RMS	5,500 Watts Surge 4,000 Continuous 60 Hz, 120V/240V AC ⁽²⁾ Single Phase 100% Duty Cycle Circuit Breaker Protection 120V Duplex Receptacles 20 Amps Each 33.3 Amps Total ⁽³⁾ 240V Receptacle 16.7 Amps	25.6 x 21.8 x 31.5 (651 x 553 x 800)	198 (90)

⁽¹⁾ When welding, available auxiliary power will be reduced.

⁽²⁾ 120V will operate either 60 Hz, or 50/60 Hz power tools, lights, etc.

⁽³⁾ Circuits cannot be wired in parallel to operate the same device.

ENGINE SPECIFICATIONS

Engine Model	Description	Horsepower & Displacement	Ignition	Capacities	Operating Speeds	Fuel Consumption
Kohler® CH395 ⁽⁴⁾	1 Cylinder, 4 Cycle, Overhead Valve Air Cooled, Gasoline Engine Aluminum Alloy, Cast Iron Liner	9.5 HP @ 3,600 RPM 16.9 cu in (277 cc)	Manual Recoil Start, with Automatic Compression Release; Manual Choke; On/Off Switch	FUEL: 1.9 Gals (7.2 Ltrs) OIL: 1.2 Qts (1.1 Ltrs)	FULL LOAD ⁽⁵⁾ 3,600 RPM NO LOAD 3,750 RPM	0.74 Gals./Hr 2.80 Ltrs./Hr 0.31 Gals./Hr 1.17 Ltrs./Hr

⁽⁴⁾ Kohler® warranty is three years.

⁽⁵⁾ Continuous AC generator power.

PRODUCT SPECIFICATIONS

Product Name	Product Number	Rated Output Current/Voltage/ Duty Cycle	Output Range	Engine Model	Number of Cylinders	HP@ Speed (rpm)	Dimensions H x W x D inches (mm)	Net Weight lbs. (kg)
Bulldog® 5500	K2708-2	125A AC/20V/30% 100A AC/25V/60%	70-140A AC 5,500 Watts Surge 4,000 Watts Continuous	Kohler® CH395	1	9.5 @ 3,600	25.6 x 21.8 x 31.5 (651 x 553 x 800)	198 (90)

RECOMMENDED ACCESSORIES AND OPTIONS

GENERAL OPTIONS



Accessory Kit

For stick welding. Includes 20 ft. (6.1 m) #6 electrode cable with lug, 15 ft. (4.6 m) #6 work cable with lugs, headshield, filter plate, work clamp, electrode holder and sample pack of mild steel electrode. 150 amp capacity.

Order K875



Undercarriage

Puncture-proof (foam filled) tires for easy transport and durability. Fold down handles for easy storage when not needed, and convenient holders for wrapping welding output cables.

Order K2722-1



Lift Bail Kit

Easily installed kit for lifting the machine with a fixed lifting point.

Order K2819-1



Canvas Cover

To protect the Bulldog® 5500 when not in use. Made from attractive red canvas material that is flame retardant, mildew resistant and water repellent.

Order K2804-1



GFCI Receptacle Kit

Includes one UL approved 120V ground fault circuit interrupter duplex type receptacle and installation instructions. Replaces the factory-installed 120V duplex receptacle. Each receptacle of the GFCI duplex is rated at 20 amps. Maximum total current from the GFCI duplex is limited to 20 amps. Two kits required.

Order K1690-1



WIRE FEEDER OPTIONS

POWER MIG® 140C

Premium compact wire feeder with continuous voltage control for MIG and flux-cored welding. (Maximum output is not available, as current input from the AC generator is limited.) Add the K2532-1 Magnum® 100SG Spool Gun for aluminum MIG welding.

Order K2471-1



Magnum® 100SG Spool Gun

Designed to easily feed 4 in. (102 mm) diameter 1 lb. (0.45 kg) spools of .030 in. (0.8 mm) or .035 in. (0.9 mm) diameter SuperGlaze® aluminum MIG wire. Includes gun, adapter kit, .035 in. (0.9 mm) contact tips (qty. 3), gas nozzle, and a 1 lb. (0.45 kg) spool of SuperGlaze® 4043 .035 in. (0.9 mm) MIG wire. Packaged in a convenient carrying case.

(Requires POWER MIG® 140C)

Order K2532-1

For best welding results with Lincoln Electric equipment, always use Lincoln Electric consumables.

Visit www.lincolnelectric.com for more details.

CUSTOMER ASSISTANCE POLICY

The business of The Lincoln Electric Company is manufacturing and selling high quality welding equipment, consumables, and cutting equipment. Our challenge is to meet the needs of our customers and to exceed their expectations. On occasion, purchasers may ask Lincoln Electric for information or advice about their use of our products. Our employees respond to inquiries to the best of their ability based on information provided to them by the customers and the knowledge they may have concerning the application. Our employees, however, are not in a position to verify the information provided or to evaluate the engineering requirements for the particular weldment. Accordingly, Lincoln Electric does not warrant or guarantee or assume any liability with respect to such information or advice. Moreover, the provision of such information or advice does not create, expand, or alter any warranty on our products. Any express or implied warranty that might arise from the information or advice, including any implied warranty of merchantability or any warranty of fitness for any customers' particular purpose is specifically disclaimed.

Lincoln Electric is a responsive manufacturer, but the selection and use of specific products sold by Lincoln Electric is solely within the control of, and remains the sole responsibility of the customer. Many variables beyond the control of Lincoln Electric affect the results obtained in applying these types of fabrication methods and service requirements.

Subject to Change – This information is accurate to the best of our knowledge at the time of printing. Please refer to www.lincolnelectric.com for any updated information.