

CUTTING, POSITIONING & WELDING EQUIPMENT

MONOGRAPH EXTREME

CNC PLASMA CUTTING MACHINE



Koike Aronson, Inc./Ransome

MONOGRAPH EXTREME



Scan to Watch Video

We Make Metal More Profitable.

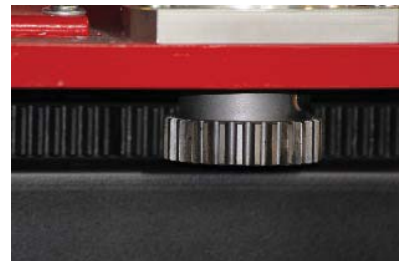
Koike Aronson, Inc. / Ransome has created a New World Standard in thermal cutting machines. The Monograph Extreme has been added to the Extreme Series family of Koike Aronson, Inc./Ransome cutting machine product line. The Monograph Extreme is designed to deliver many years of reliable performance and efficient production. The Monograph Extreme features a unitized downdraft table design, keeping the overall footprint as compact as possible, thus maximizing your production space. This design allows the operator full view of the cutting operation. Maximum fume extraction is achieved with the deep design of the downdraft table.

Equipped with Hypertherm's Edge-Pro Ti CNC and Integrated Sensor Ti Torch Height Control, this machine allows ease of use for any operator. The Monograph Extreme's sturdy design and low backlash planetary gearboxes allow this single side drive machine to deliver premium motion and accuracy.



Precision Ground Rail and Guide Rollers

Ensures smooth and accurate motion.



Precision Ground Rack & Drive Pinions

Large diameter pinions provides accurate and smooth machine motion.



Planetary Gearbox and Servo Motor
Precise and accurate motion



Fork Truck Lift Pockets
Easily move machine from one location to another.



Emergency Stop
Quickly and safely shuts off machine motion and cutting process.

STANDARD EQUIPMENT



Adjustable Leveling Pads
Allows for easy leveling



Limit Switches
Used for machine over-travel as well as homing.



Cable Carrier
Allows cables and hoses to be managed properly when moving from one end of machine to the other.



**Hypertherm® Sensor-Ti
Torch Height Control**

- Integrated Drive motor and Sensor THC Technology
- Stroke length: 152 mm (6 in.)
- Max. Speed: 10,160 mm/min. (400IPM)
- Designed for conventional plasma systems
- Rapid Part Technology
- Magnetic Torch Breakaway Collision



Hypertherm EDGE® Pro Ti

- X&Y Axis 450 Watt Integrated Drives
- Z Axis 100 Watt Integrated Drives
- Windows® Xpe
- 250GB SATA Hard Drive
- 2.0 Ghz Ceron Core CPU
- 15" Glass Touchscreen
- Minimum 1GB Memory
- 2 USB 2.0 Ports
- Part Program Support
- Remote Help
- Networking Wireless, LAN, Hypernet RS232/422
- DXF Input
- Simple Shape Nesting
- Cut Pro Wizard

PLASMA OPTIONS

powermax 65

Production Pierce 1/2" Mild Steel



powermax 105

Production Pierce 3/4" Mild Steel



powermax 85

Production Pierce 5/8" Mild Steel



MAXPRO 200

Production Pierce 1" Mild Steel



OPTIONAL EQUIPMENT



Fume Extraction Unit

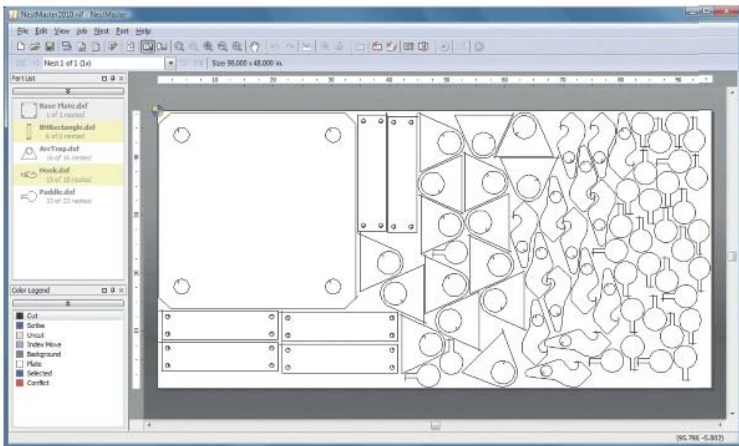
- **Ledge-less construction**
Eliminates dust build-up and accommodates wash down environments
- **Compact Design**
Minimizes floor space
- **Powerful performance**
Proprietary ExtraLife™ Filter Cleaning System provides 30% more cleaning energy.
- **Cost savings**
Fewer filter change outs, reduced filter disposal costs, less energy usage.



CNC Air Conditioning Unit

Provides additional cooling-required for machines operating in Temps above 120°F (49°C). Consists of 1024BTU 115vac industrial tool grade air conditioner and CNC enclosure for external cooling of CNC cabinet.

Hypertherm® Cam Solutions NestMaster™ 2012



Standard Features Part creation and development

- Integrated 2D CAD program to create and edit CAD files
- Variable Shape Parts feature to develop common parts from templates

CAD/CAM import and conversion

- Import CAD files (DXF and DWG file formats)
- Automatic CAD file correction and error notification
- Automatic spline/ellipse smoothing and reduction
- Separate multiple parts from a single CAD file
- Automatic mapping of CAD layers to processes (cut, mark)

Automatic nesting

- Nest with the click of a button. NestMaster offers entry-level automatic nesting included as standard. This feature is simple to use, yet highly effective.

Interactive manual nesting

- Drag, drop and bump parts on the nest
- Move, mirror, rotate, or array parts
- Part interference detection
- Edit lead-in/out position within the nest
- Automatic and manual nest sequencing
- Control cut direction
- Animated cutting sequence simulation

Built-in process parameters

- Interactive kerf and feedrate value process parameters
- Interactive lead-in/out parameters
- Interactive separations for part, plate, and pierce spacing

Reporting

- Management and shop reports
- Export reports directly to PDF, Excel spreadsheet (*.xls), CSV (*.csv), or Web page (*.html)

Output

- Post-processor with NC output
- Automatic kerf/pre-kerf compensation
- DXF output

WORKSHEET

Effective Cutting Width: Effective Cutting Length:
 Material Types:

Material Thickness Range

Plasma Thickness:

Plasma System

- Hypertherm® powermax 65
- Hypertherm® powermax 85
- Hypertherm® powermax 105
- Hypertherm® MAXPRO200

Other Options

- Fume Collector
- Nesting Software
- Air Conditioning Unit

CNC Controller

Hypertherm® Edge Pro Ti

Plasma Type

Voltage:

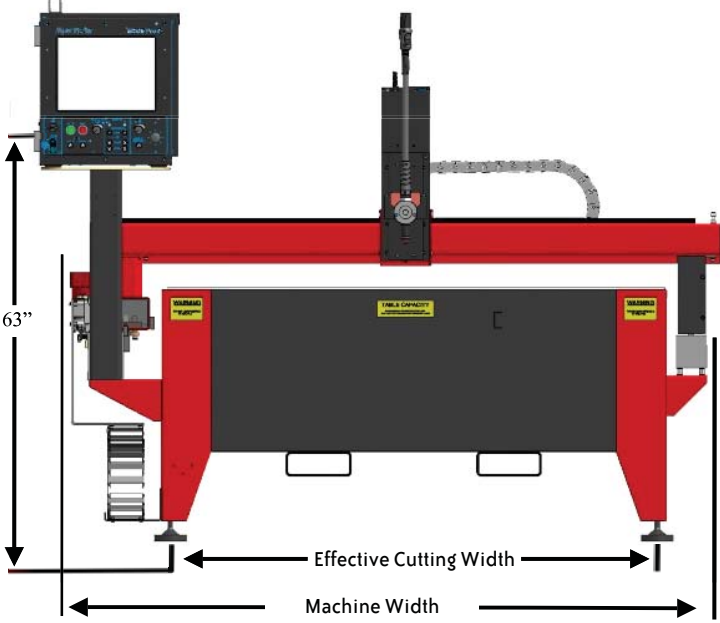
Cutting Table

Downdraft

Plasma Height Control

Hypertherm® Sensor Ti
 Torch Height Control

SPECIFICATIONS



MONOGRAPH EXTREME SPECIFICATIONS						
Effective Cutting Area (ft)	5 x 10	5 x 12	5 x 20	6 x 10	6 x 12	6 x 20
Effective Cutting Width	60 in.	60 in.	60 in.	72 in.	72 in.	72 in.
Effective Cutting Length	120 in.	144 in.	240 in.	120 in.	144 in.	240 in.
Rapid Traverse Speed	1000 IPM	1000 IPM	1000 IPM	1000 IPM	1000 IPM	1000 IPM
Machine Width	83 in.	83 in.	83 in.	95 in.	95 in.	95 in.
Machine Length	191 in.	215 in.	382 in.	191 in.	215 in.	382 in.
Machine Voltage	115VAC @ 15 Amps					
Table Duct Opening	12 in. for all Models. Manual Damper for 20 ft. Models.					
CNC Controller	Edge Pro Ti					
Drive System	2-Axis Servo Drive					
Table Type	Downdraft					

Specification are subject to change without notice